

PFJ Mouldings, S4S, Jams and Smalls

'Rough'

'S4S'



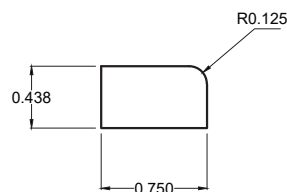
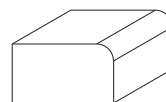
Woodstock Timbers mouldings are manufactured from 100% sustainable radiata pine, from Chile, NZ, Brazil and Australia. The timber is then finger jointed to produce a quality timber moulding in many sizes, finished with a single coat of acrylic primer for the ultimate smooth finish.

We have all sizes available from shoe products, through to S4S and architrave and skirtings. We offer a door to door service for 40' FCL orders only, as we manufacture to order from our Factories in both Malaysia and Indonesia.

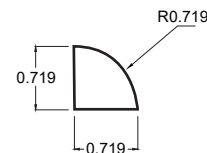
Due to some of the current Pine shortages, we are also experimenting with Scottish Pine and Rubberwood but do not mix our containers with different kinds of wood fibre.

Please call to discuss your requirements as we are looking to partner with only a few select Customers in the US, so we can always offer you the best service and attention. Current lead times for production only, is around 6 weeks from receiving your confirmation.

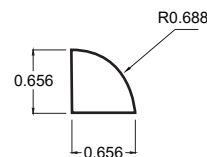
L254



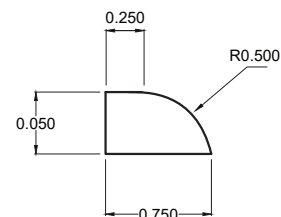
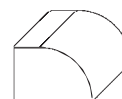
WM105



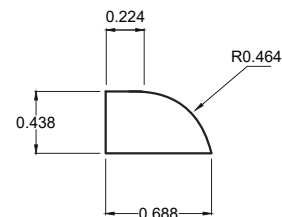
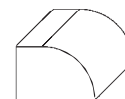
WM106



WM126



WM129



Woodstock Timbers
Import/Export
Timber Specialists

We look forward to hearing from you, and discussing the opportunity for a long term mutually rewarding business relationship together.

Facts Sheet

Items	Keypoints	Specific Requirements
Raw Material (lumber/log)	Substrate Quality	Radiata Pine & other timber fibres. North America products only accept live knots less than 2.0cm 2.0cm in diameter. Wood defects include Pitch Pocket, Heartwood etc.
Auxiliary Material	Fingerjoint Glue (Brand and Model)	Henkle(3185)
	Edging Glue (Brand and Model)	Henkle(3185)
	Calcium carbonate	above 600 grit, whiteness ≥93
	TopCoat Paint (Brand, Model and Color)	GND309S
	Moisture content	10 +/- 2%
Production Process	Finger Jointing	The length of every single blank is between 100mm and 500mm. To avoid the potential wrapage risk for exterior jamb, the length of every single blank is between 300 mm to 400mm. The length of the fingers is between 7mm and 11mm. For all small profiles, the fingerjoint glues are applied on both ends.
	Edge Gluing	Edge gluing is applied to any products that overall width exceed 90mm.
	Repairing and Sealing	All minor lumber cracks, knot cracks, small heart pith and tiny pin holes is dug out first. Then all the holes must be filled with 502 glue and sawdust. All surfaces must be flat and smooth. All the knots and heart pith on four sides must be sealed by oil-based sealer.
	Machining	All surfaces of the product are smooth, even and flat.
	Product Appearance Quality	Any machining defects like: raised fibre, skip dressing are not allowed on product front and back surfaces. S3S Board back need improved, no obvious chain marks on back.
	Product Dimension & Moisture content	Final Product Moisture: 8-12% :
Products Final Inspection		



Woodstock Timbers

**Import/Export
Timber Specialists**

**101 Sheridan St, Cairns
QLD 4870 Australia
ray@woodstocktimbers.com**

**Phone: +61 419 022 683 (AUS)
Phone: +1 407 730 1452 (USA)
www.woodstocktimbers.com**